

*Our mission is to mobilize philanthropy by matching donors and resources with community needs for the benefit of our region.*



## Impact Update: Spring 2019

### **Jump to an Article in This Issue:**

**Message from the President**

**Building Blocks for Nonprofits**

**Recent Grants**

**Grants Available**

**Upcoming Events**

[Visit Our Website](#)



### **Message from the President**

resources required to make the impact we all want to see. Feel free to reach out to Tricia at [pgrime@cfsema.org](mailto:pgrime@cfsema.org).

In recognition of some amazing work, Holly Stickles has been promoted to the role of Program and Donor Services. Holly will provide guidance and support to local non-profits seeking grants, students in pursuit of scholarships and our fund advisors who know that they can rely on Holly to make their philanthropy as effective as it can be. Be sure to read Holly's piece below on our recent grants and those that are currently available. You can also reach Holly at [hstickles@cfsema.org](mailto:hstickles@cfsema.org).

We will very soon celebrate the one-year anniversary of Rayana Grace joining us as our Arts and Culture Program Manager. Our efforts to support and encourage arts and culture in Fall River and New Bedford have been significantly enhanced by Rayana's efforts. From grants for public art to organizational capacity-building (read more about that below) we are looking forward to working with these communities to see this critical part of our community grow and evolve. You can reach Rayana at [rgrace@cfsema.org](mailto:rgrace@cfsema.org).

And very sadly, we are saying goodbye to Val Bassett who has led the Women's Fund since 2014 and has recalibrated our community's commitment to philanthropy in support of elevating and advancing economic security for women. Val's leadership over these past 5 years has established the Women's Fund as an essential and effective force in this work on behalf of all

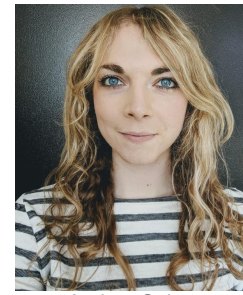


Tricia Grime,  
Development  
Manager

of us that believe in equity and fairness. Val will be the first to admit that she stands on the shoulders of those who came before her in this work but with her accomplishments, she has now joined them! Read Val's announcement [Womens Fund ED letter](#)

The Women's Fund will be welcoming new Development Coordinator, Audrey Spina, on April 2. Audrey comes to the Women's Fund from the Development Office of the New Bedford Whaling Museum, with a background in writing and the arts and a passion for women's issues.

With this mix of good and sad news, this is not unlike an early Spring day: moments of sunshine but an occasional remembrance of the cold - but warmer days are not too far away and by then we will have achieved all that much more. Please enjoy this newsletter and let me know what you think at [jvasconcellos@cfsema.org](mailto:jvasconcellos@cfsema.org).



Audrey Spina

John Vasconcellos, President

[Back to Top](#)

## Building Blocks for Nonprofits

As part of our Creative Commonwealth Initiative, we launched our Building Blocks for Nonprofits Capacity Building Training Program. The program cohort is comprised of 14 smaller arts and culture nonprofit organizations ranging from the Fishing Heritage Center in New Bedford to the Greater Fall River Art Association.

The program began with a Lift-Off on Wednesday, January 16th hosted at the UMass Dartmouth Galleries in downtown New Bedford. Cohort members had the opportunity to network with each other while viewing the Black Spaces Matter exhibit.

The first session of the program was Wednesday, January 23rd and covered the topics of Human Resources and Volunteers. The participating organizations had a five-hour training that explained the ins and outs of preparing their organization for volunteers and best practices for hiring and supervising paid staff. The second session on Wednesday, February 20th took a deep dive into branding and marketing.



Cohort Lift Off with Gordon Gottlieb

The program will run monthly through June 2019. Upon successful completion, organizations will be awarded a mini-grant to assist with the implementation of a project.

This cohort-style program is being led by TDC, a nationally recognized nonprofit management consulting and research firm. TDC has worked with nonprofit organizations that vary in size and location, from the Michigan Opera Theatre to The Trustees of Reservations. We sat down

with Gordon Gottlieb, Human Resources Consultant at TDC and the coordinator for this program, to ask him more about Building Blocks.

**-While the organizations are all under \$250,000 operating budget, they do range in size. Have you noticed any interesting similar trends amongst the cohort members despite the differences in size and structure?**

Just two sessions into the program, it's clear how passionate all the groups-regardless of size, longevity or budget-are about carrying out their visions for using arts and culture to enhance the lives of people who live in and around New Bedford and Fall River.

**-What are your initial impressions of the group? What are the key learnings you hope the group will take away from program after six months?**

I am impressed and delighted by their spirit and their commitment. The challenge they all face is how to take their visions and implement them in meaningful ways-whether they want to create classes or experiences or programs targeted towards their specific audience. This is where capacity building comes in.

**-Why do you think capacity building is important?**

Capacity building helps give visionaries the concrete skills-managing people, managing finances, managing messages-that translate vision into action. To their credit, everyone appears hungry to learn these crucial skills and to bring them back to their organizations.

[Back to Top](#)

## Recent Grant Awards



**OSS at State House Chamber**

the Women's Fund in the coming week.

### Women's Fund Grant Supports Girls and Women's Advocacy

In an innovative approach to invest in social and systemic change, the [Women's Fund](#) has granted \$10,000.00 to the YWCA of Southeastern Massachusetts for expansion of girl's and women's advocacy leadership development activities. The Women's Fund's most recent grant will build advocacy skills and leadership for diverse girls and women by supporting a new part-time Advocacy Coordinator position at the YWCA. Look for details from

For information about Community Foundation grant opportunities contact Holly Stickles, Programs and Donor Services Manager, at [hstickles@cfsema.org](mailto:hstickles@cfsema.org) and 508-996-8253 ext. 202.

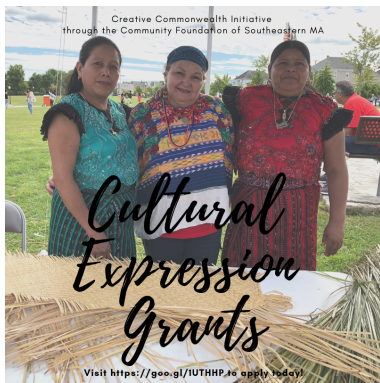
To learn more about starting a Fund at the Community Foundation contact John Vasconcellos, at [jvasconcellos@cfsema.org](mailto:jvasconcellos@cfsema.org) and 508-996-8253 ext. 201

[Back to Top](#)

## Grants Available

### Cultural Expression Grants

The Creative Commonwealth Initiative will award several grants to help elevate the cultural and artistic expression of culturally diverse and immigrant communities in Fall River and New Bedford. The Community Foundation seeks to fund efforts that are organized and driven by these communities. Our intent is to encourage and support the celebration of authentic cultures and the creative expression of historically under-invested populations. Proposals should be reflective of



Artists at the Festiva Típica

the needs and interests of the populations they wish to serve. Projects should be underway by December 2019.

Grant Awards up to \$20,000.

<https://www.cfsema.org/about-us/creativecommonwealth#G5>

### James Arnold Fund Grants

The Community Foundation is [currently accepting requests](#) for funding from 501(c)3 organizations providing services related to immigration, teaching, and or hunger in the Greater New Bedford area. Proposals, which should consist of no more than two pages, should be submitted to

[hstickles@cfsema.org](mailto:hstickles@cfsema.org) by no later than April 12<sup>th</sup>.

[Back to Top](#)

## Upcoming Events

### New Bedford Lyceum April 6, 2019

#### W. Kamau Bell, Zeiterion Performing Arts



Emmy-nominated comedian, political satirist and host of CNN's United Shades of America, W. Kamau Bell delivers incisive, scathingly funny commentary on modern society that will change your view of race, politics and social issues in America. His edgy yet level-headed view of the world leaves you with a more hopeful understanding of our country's challenges, as well as conversation-stoking takeaways on humanity and social change that will have you contemplating the state of the union long after he has left the stage.

A series of screenings and panel discussions are being offered in conjunction with the Zeiterion Performing Arts Center Event: [More Here](#)

- [Creating Connection Workshop](#) - Tuesday, March 26th
- [AHA! Night Sustainable Southcoast](#)- Thursday, April 11<sup>th</sup>
- [Women's Fund Tiara 5K](#)- Sunday, May 12<sup>th</sup>
- Community Foundation Annual Meeting- Tuesday, June 11<sup>th</sup>
- Summer's Last Blast- Friday, September 13<sup>th</sup>

[Back to Top](#)

## Support the Annual Fund of the Community Foundation

The Community Foundation is committed to be the most effective connector, convener, innovator, and funder of philanthropic solutions that improve the quality of life in our region.

We need your help to fulfill this promise. Every donation to our Annual Fund directly supports our effort to provide the greatest local impact for our donors and grantees.

As you read this Impact Update, please consider a meaningful gift to our Annual Fund. Help us to magnify our local impact through your engagement and support. Together, let us make a difference for those people and causes from Our Community who need us most.

[Donate Now](#)

Community Foundation of Southeastern Massachusetts  
128 Union St., Suite 403, New Bedford, MA 02740 | 508-996-8283 | [www.cfsema.org](http://www.cfsema.org)

Community Foundation of Southeastern Massachusetts, 128 Union St., Suite 403, New Bedford, MA 02740

[SafeUnsubscribe™ {recipient's email}](#)

[Forward this email](#) | [Update Profile](#) | [About our service provider](#)

Sent by [jvasconcellos@cfsema.org](mailto:jvasconcellos@cfsema.org) in collaboration with



Try it free today